

RadaGlass™ Liquid Glass- Pure Nano Technology

Welcome to the world of SiO₂ Liquid Glass nano layering technology. RadaGlass™ is a Certified Green Environmentally product which offers truly stunning characteristics.

So what is nano technology?

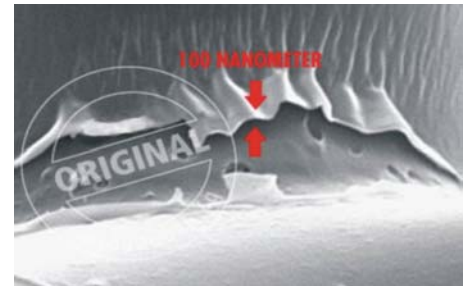
Nano technology takes many forms but in all instances it is concerned with the engineering of nano layers, nano particles, or nano “devices”. The word nano comes from the Greek word meaning “dwarf” or small. We now use the term in a scientific sense and so when we are talking of nano products we are referring to items or coatings which have dimensions that are measured in billionths of a metre. In other words we are looking at products almost at the molecular level.

Does liquid glass contain any potentially harmful “nano” particles?

No.

So how big is a billionth of a metre or one nano-metre?

A nano metre (nm.) is approximately 80,000 times thinner than a human hair. Our treatments are approximately 100nm in depth; this means that they are approximately 10 molecules thick.



So what exactly does the product contain?

This truly amazing product contains pure, particle free, SiO₂ (Silicon Dioxide) which means that it contains “pure glass”. The glass is in a molecular form and is held in a liquid ; it does not become “glass” until it is allowed to dry.

Does the coating change the appearance or texture of the treated surface?



The nano coating is invisible to the naked eye. It does not alter the appearance or texture of the treated surface.

So how does the nano coating work and what are the benefits?

The liquid glass coating is a highly durable, flexible, super smooth, breathable and *Super Phobic coating (*repels oil , water, dry soiling, and chemicals) Once treated the surface will repel soiling agents. Dry dirt will not stick to the glass covered surface and liquids such as red wine, or coffee, are unable to penetrate the coating on fabrics as each filament of every fibre is protected with a nano layer of glass.

Most significantly almost all treated surfaces can be cleaned with water alone. No cleaning chemicals are needed

APPLICATION (GENERAL)

IN ORDER TO GAIN MAXIMUM PERFORMANCE FROM THE LIQUID GLASS NANO COATING IT IS ESSENTIAL THAT ALL SURFACES AND FABRICS ARE CLEAN AND STABLE. FABRICS AND SURFACES MUST BE FREE OF DIRT, FATS AND WASHING POWDER / FABRIC CONDITIONER RESIDUES.

RadaGlass™ Liquid Glass– Application Guide

Application (continued)

HARD SURFACES SUCH AS WINDSCREENS ,WORTOPS, WASHBASINS AND OVENS SHOULD BE CLEANED **THOROUGHLY** . IN SOME INSTANCES IT IS BEST TO CLEAN THE SURFACE TWICE. FIRST CLEAN THE SURFACE TO REMOVE HEAVY SOILING SUCH AS INSECTS ON WINDSCREENS OR SOAP DEPOSITS FROM SINKS AND THEN RINSE OR WIPE DOWN WITH CLEAN WATER.

NEXT "DEEP CLEAN" WITH THE PRE CLEAN SPRAY OR WIPE.

WHEN THE SURFACE IS DRY (AFTER APPROXIMATELY 1 MINUTE) SIMPLY APPLY THE LIQUID AS DESCRIBED BELOW.

(STONE TREATMENTS CAN BE APPLIED TO SLIGHTLY DAMP SURFACES)

Application is by spray, pre-impregnated wipe or dispensing bottle. Different surfaces will require different application methods and drying times. (Please refer to each pack for guidance.)

To Protect Fabrics.

Spray the liquid glass on the fabric from a distance of approximately 25cm. Ensure that the fabric is covered evenly and fully moistened. We recommend 2 spraying passes, spraying "wet on wet."

If "pooling" occurs then it is suggested that the liquid is drawn over the surrounding area with a clean cloth in order to disperse the liquid. Treated items can be gently handled when wet. Please allow to dry on a hanger or similar device. If necessary drying times can be enhanced with the use of warm air.

Treated fabrics can be washed and dry cleaned. Resistance to washing depends on the nature of the fabric which is being treated. All treated fabrics can be ironed when dry.



Coverage

The coverage depends on the nature of the fabric. 250ml of fabric treatment will cover approximately 10m² of very light fabric such as silk, or 5m² of a fabric such as carpet.

In most instances a 250ml bottle will protect the seating fabric within a car.

How do I remove spills or soiling agents from treated fabrics.

Fresh spills can be removed by dabbing the surface with kitchen towel or tissue. This action will absorb the liquid rapidly. If a liquid is left on a fabric for a prolonged period it will either evaporate, or it will seep into the spaces within the weave of the fabric. In either case a trace of the soiling agent may be visible even though the soiling agent will not have penetrated the fibre. In such instances either "sponge clean" the surface of the fabric with a wet sponge or cloth . Alternatively, wash the fabric on a wash cycle which is 60°C. or below. (Please refer to manufacturers instructions.) In most instances cleaning can be conducted with water alone but in some instances, especially where oil or heavy soiling is present an appropriate cleaning agent may be used to enhance the cleaning.

Treatment of Leather and Suede.



The nano coating will provide protection from "impact staining" on almost all suede and leather. Impact staining means if wine or a similar liquid is spilled on a surface the probability is that the liquid will not penetrate the coating and it will not stain the leather or suede, if it is cleaned away rapidly within 2 or 3 minutes. Our research tells us that in most instances the coating provides excellent protection but not all leathers and suede are manufactured in the same way ; some contain polishes which limit the adhesion the liquid glass. The treatment can be applied to items such as training shoes, suede jackets, suede shoes, gloves etc. but it will not be effective on surfaces which have been treated with polish.

RadaGlass™ Liquid Glass– Application Guide

Can the treatments be re applied?

Re application follows the same format as used during the initial application process; simply make sure that the surface is completely clean , dry and free of contaminants such as washing powder residue, or detergents. (*Please read the section relating to “application”)

To treat Hard surfaces.

You are advised to use the NANO EXPERT pre cleaning spray or wipe. (This is a specially constructed isopropanol based alcohol.) In certain instances it is necessary to first clean a heavily soiled surface before performing a “deep clean” using the alcohol based cleaner.

To apply the liquid glass coating; simply wipe the surface with the pre treated wipe making sure that all of the surface is covered. You are also advised to turn the wipe so that both sides of the wipe are used. Buff the surface with the wipe until the wipe is dry.

Spray application.

Spray onto the surface from a distance of approximately 25cm ensuring all of the surface has been covered. 10-12 spray actions being sufficient for a wash basin /sink or small to medium sized windscreen. Then, quickly work the solution over the surface with a tissue or clean lint free cloth or wipe. Buff the surface until the surface is dry. This buffing action usually takes 20-30 seconds

Drying times.

The treated surface can be handled soon after the coating has been applied but the nano coating does not become fully effective until some hours after application. Water based products (for fabric, wood and stone) take 24 hrs to become fully established, alcohol based products (for metal, plastic and ceramics) take 12 hrs to become fully established. As noted wash basins, windscreens etc can be used 5 minutes after treatment .

Bacteriostatic and anti bacterial benefits.

All surfaces treated with nano expert liquid glass treatment benefit from the bacteriostatic effect of the coating. Bacteriostatic means that bacteria are unable to develop on the surface. We also provide anti bacterial products which eliminate MRSA, e-coli, and salmonella bacteria (in accordance with EU guidelines)

Rejuvenation of hard surfaces.



Almost all domestic surfaces are exposed to a wide range of soiling. The nano coating repels soiling agents, but over time microscopic elements of very sticky polluting agents will adhere to the surface and this will impair the efficiency of the coating.

Wiping the surface with an alcohol based cleaning agent such as computer screen cleaning products /window cleaning solution/ isopropanol will rejuvenate the surface . Wash basins and windscreens are easily rejuvenated within a matter of seconds.

RadaGlass™ Liquid Glass– Application Guide

How long will the protection last?

Every environment is different as some living spaces encounter heavy usage whilst others encounter far less “wear and tear.” The treatments are all very durable and they will last for many months or even years. We expect the hard surface coatings to last for at least 6 months in domestic environments. This period may be longer in many instances. Windscreen treatments will last for approximately 12,000km

Are the liquid glass coatings “food safe”?

All of our coatings have been tested by independent agencies and are food safe.

Are the liquid glass coatings Dermatologically tested?

All of our products are subjected to dermatological testing .

Are the liquid glass coating heat tolerant?

Liquid glass is stable up to a temperature of 450°C. Most domestic ovens reach a maximum temperature of 300°C. The coatings are also suitable for use within fridges and freezers.



Liquid Glass metal Easy Clean applied to a commercial oven shows the difference in appearance after 3 months in production

Can I apply liquid glass to any surface?

Liquid Glass bonds to surfaces via electrostatic force. There are no glues, resins or other chemicals within this product. Each form of liquid glass is different eg. the treatment which is designed for ceramics will not bond effectively to plastic and the plastic treatment will not bond effectively to ceramics.

It should be noted that the plastic treatment will not adhere to all acrylic surfaces .

Are nano expert products environmentally friendly?

Our technology is recognised as being of great significance in the battle to protect our planet.

The technology has won several awards from leading “environmental” agencies.

It should be remembered that in most instances treated surfaces can be cleaned with water alone this means that a vast amount of POPs (Persistent Organic Pollutants) such as detergents can be withdrawn from sale.

Precautions.

Before applying the liquid glass coating to a surface make sure that you have read the manufacturers instructions ;some nano treatments contain alcohol and so the user must be aware that *alcohol is combustible and therefore surfaces should never be treated near to apparatus which could cause ignition; also some surfaces may be sensitive to alcohol . You are advised to test an area , which is normally hidden from view, before application. The treatment is completely stable and inert as soon as the alcohol has evaporated .

When using a water based product you are advised to test an area which is normally hidden from view, before application. in order to test colour fastness or adverse reaction to water.

Work as quickly as possible when working with products which contain alcohol.

Please use bottled products within six months of opening.

Do not apply in rain, frost or strong sunlight

Apply alcohol based treatments in well ventilated areas