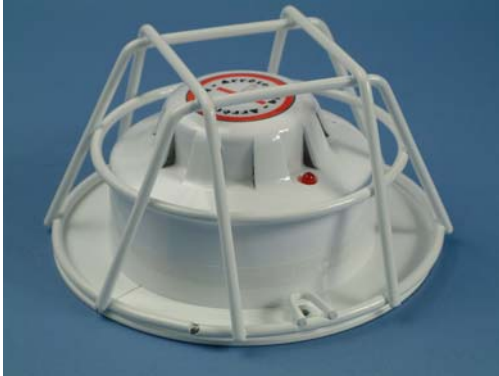


# Product Information Sheet

## Cig-Arrête Anti-Vandal Cage (Part No CSA-AVC)



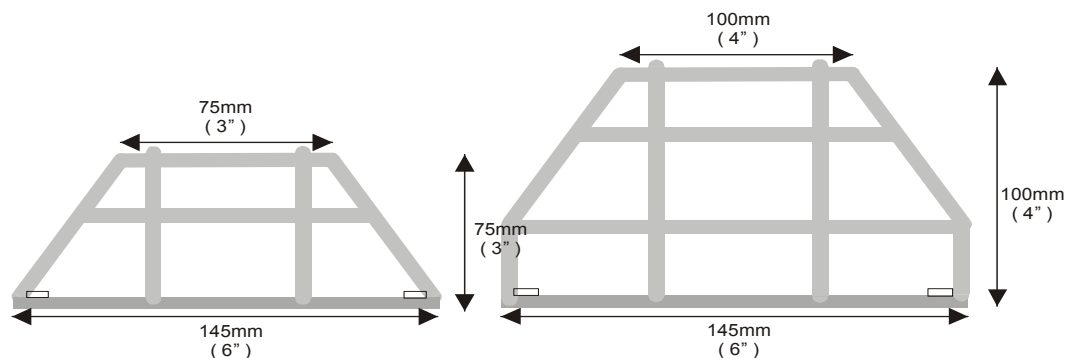
### Description

The Cig-Arrête Anti-Vandal Cage offers a high degree of physical protection to each Cig-Arrête Sensor unit, in areas that may be subject to wilful damage and vandalism.

### Product Features

The Cig-Arrête Anti-Vandal Cage is manufactured using a high grade steel, with fully welded joints to provide a robust cage structure. The steel cage is finished with a high gloss white powder coating paint to maintain its appearance throughout its life.

The cage base plate is manufactured from mild steel with the same powder coat finish. To ease installation or even retrofit after the Cig-Arrête Sensor unit has been installed, the cage base plate is split into two halves which can be inserted either side of the sensor base once the fixing screws have been slackened.



**Part No CSA-AVC**

**Part No CSA-AVC2**

**Note:** Part No CSA-AVC is suitable for all Cig-Arrête Sensor Units.

Part No CSA-AVC2 must be used for the CSA-GDV stand alone unit due to increased depth of the Voice Sounder base

***Innovation for a new tomorrow***

Radal Technology Ltd  
Unit 1 Webber Court  
Billington Road  
Burnley  
Lancashire BB11 5UB  
England

Issue No: CSA/AVC 031202

Phone: +44 (0)1282 463 770  
Fax: +44 (0)1282 463 771  
Email: info@radaltechnology.com

